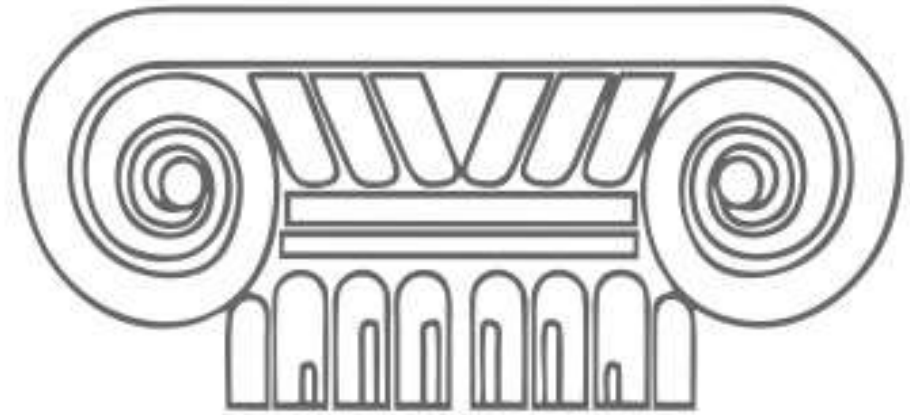


# The Penthouse

A unique property in the city of  
Athens

**ΤΕΧΝΙΚΗ ΕΤΑΙΡΕΙΑ**



**ΕΚΦΡΑΣΗ**  
**ΧΡΗΣΤΟΣ ΣΙΑΦΑΡΙΚΑΣ**



Our latest  
venture in the  
heart of  
Athens!

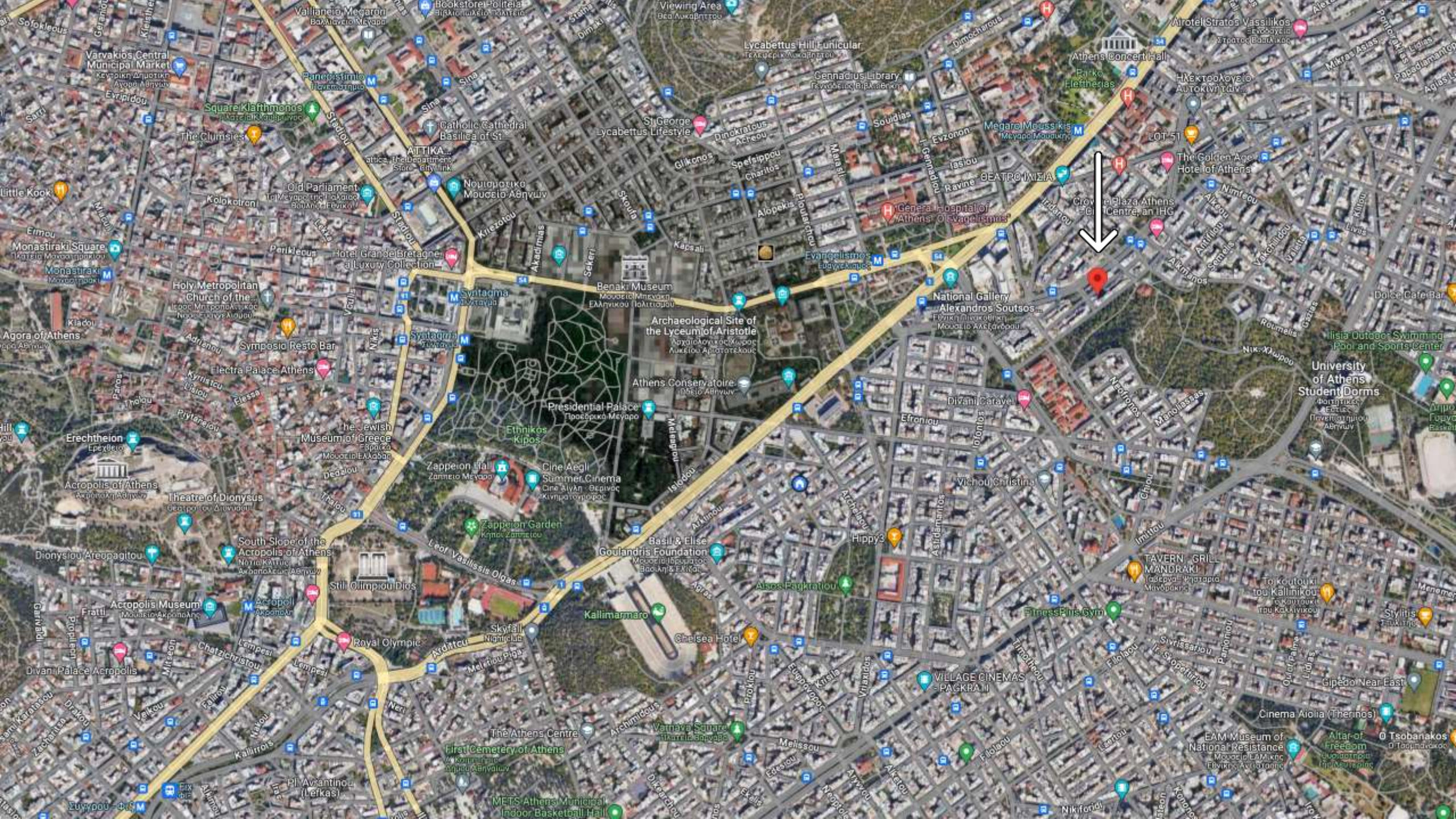


# The Building

- Located in the city center of Athens, at the famous Hilton district right across the renovating Athens Hilton Hotel
- 5 min. walking distance to metro station
- Reenacts simple and austere lines of Greek culture coupled with modern technology and comfort
- Minimalistic design
- Sustainable “smart house”, environmentally friendly









# The Penthouse






- Represents the most exceptional flat of the project
- Claims the exclusive use of the 65 sqm. terrace, providing a private lounge with a jacuzzi
- A panoramic 360 view of Lycabettus Hill, Acropolis and the city of Athens
- The apartment consists of a double bedroom with an italian walk-in closet, an open-space kitchen, a living room and a modern bathroom
- Private parking space and a storage room in the basement
- KNX "smart house" with A+ energy class
- Solar panels and heat pump
- Underfloor heating
- Thermally insulated aluminium frames with energy efficient glasses
- Air-conditioning and LED lighting in all areas

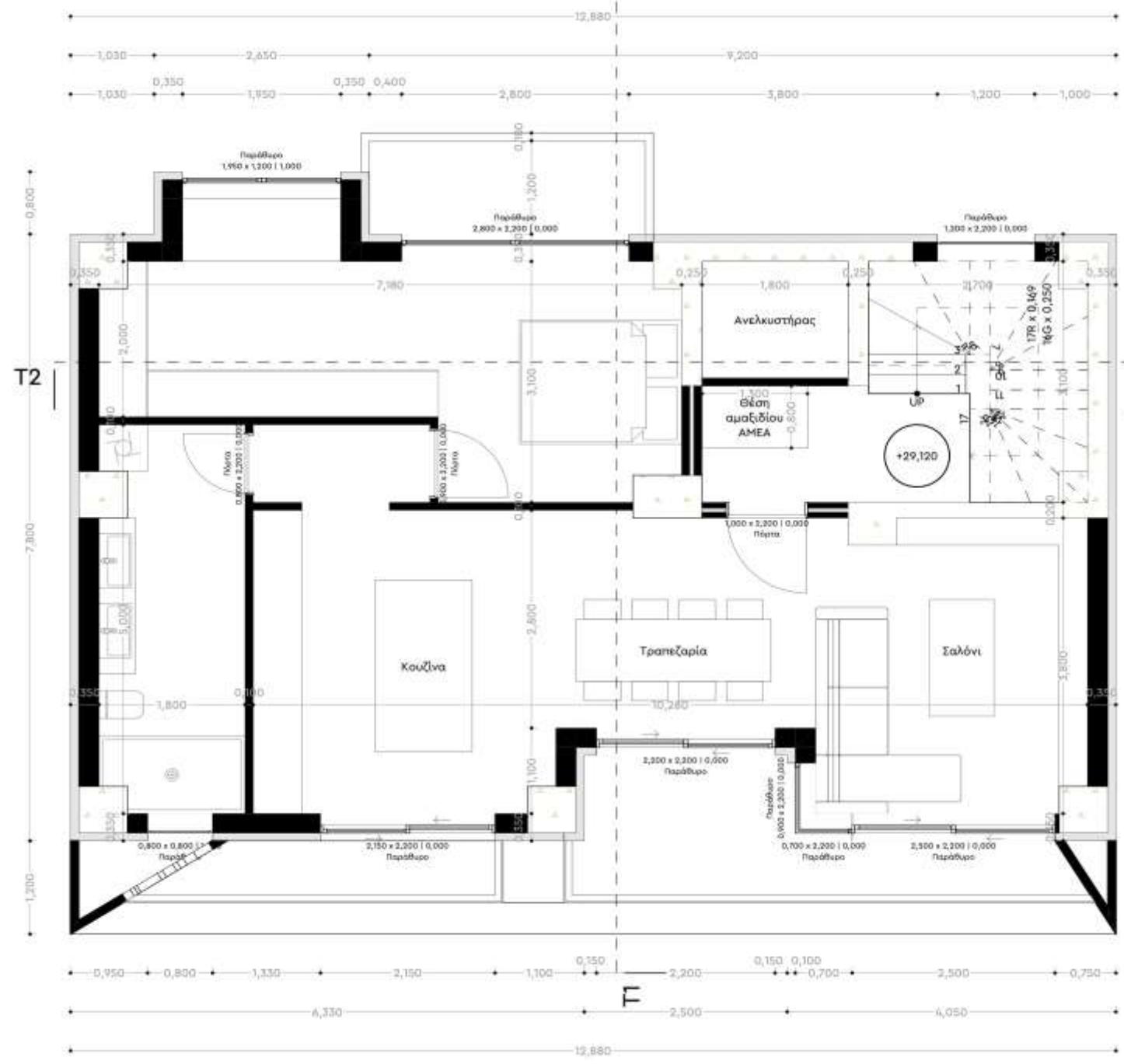






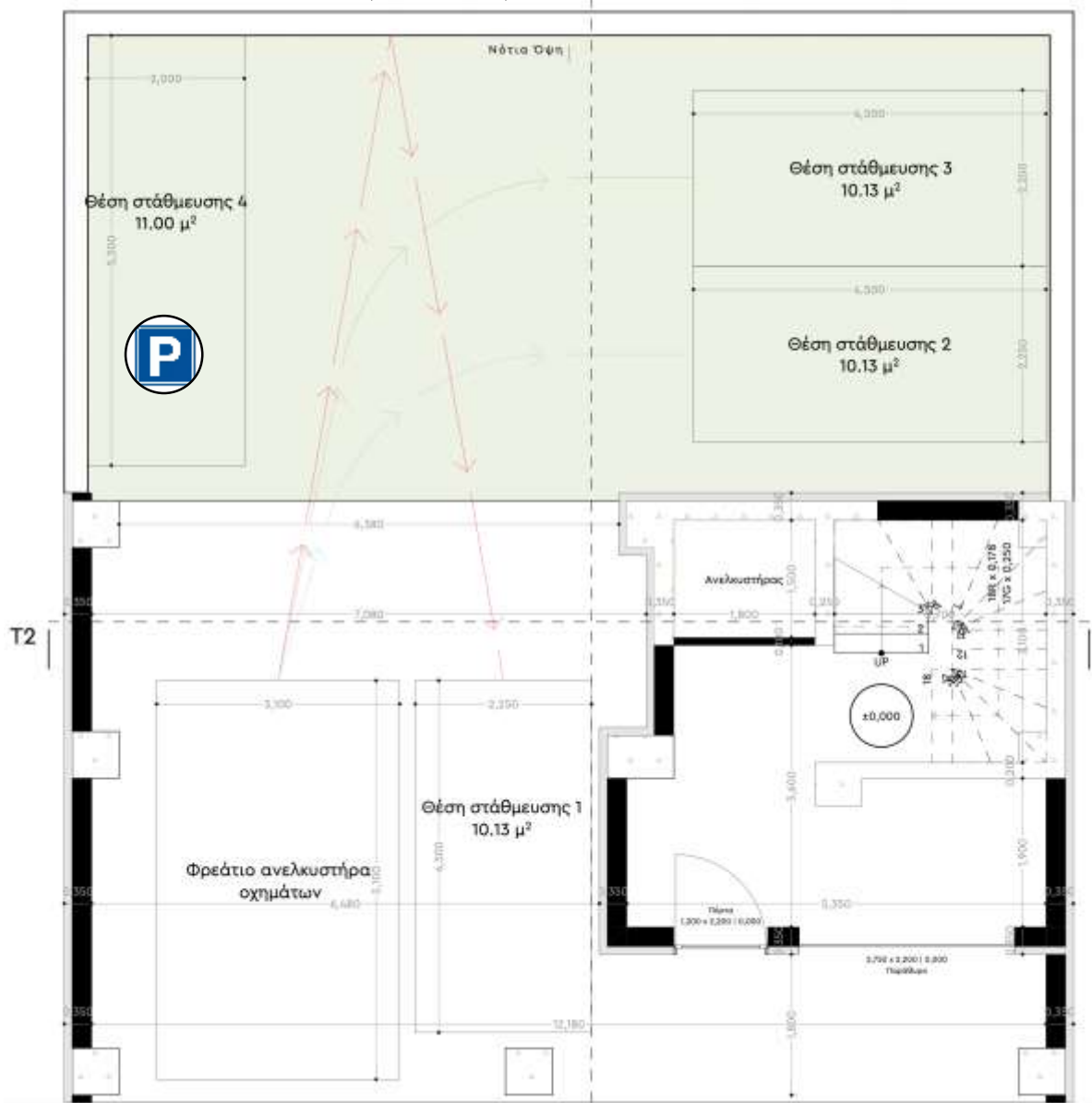
# Layout specs

-  1 Bedroom
-  1 Bathroom
-  82.24 m<sup>2</sup>
-  Storage space
-  1 parking place





## Parking spot layout (Pilotis)



## Storage spot layout (2<sup>nd</sup> basement)

